



Restaurant Support Office
6800 Bishop Road, Plano, TX 75024
Tel: 972-769-3100 Fax: 972-769-3101

STORE:
RAISING CANE'S RESTAURANT
3610 FIFTH AVE
PITTSBURGH, PA, 15213
PROTOTYPE: NTV
SCHEME: A
RESTAURANT #RC934



17710 Detroit Avenue Lakewood, Ohio 44107
Phone (216) 321-3134 Fax (216) 521-4624
www.adaarchitects.com

THIS DOCUMENT CONTAINS INFORMATION PROPRIETARY TO ADA ARCHITECTS, INC. UNAUTHORIZED USE OF THESE DOCUMENTS IS EXPRESSLY PROHIBITED UNLESS AGREED UPON IN WRITING.

80% REVIEW

ENGINEER INFORMATION:

SHEET REVISIONS

#	DATE	TYPE
1		
2		
3		
4		
5		
6		
7		
8		
9		
10		

CODE REFERENCE ANALYSIS

PERMIT DATE: 08/09/2022

JOB NO. 22027

01 CRA
SHEET NO.

CODE AND BUILDING DATA

APPLICABLE CODES:

PA UNIFORM CONSTRUCTION CODE 2018
BUILDING CODE: 2018 INTERNATIONAL BUILDING CODE
2018 INTERNATIONAL EXISTING BUILDING CODE
MECHANICAL CODE: 2018 INTERNATIONAL MECHANICAL CODE
PLUMBING CODE: 2018 INTERNATIONAL PLUMBING CODE
ELECTRICAL CODE: IBC CH. 27, NFPA 70-2017, NEC
FIRE CODE: 2018 INTERNATIONAL FIRE CODE
ENERGY CODE: 2018 INTERNATIONAL ENERGY CONSERVATION CODE
ACCESSIBILITY CODE: ANSI A117.1-2003
CH. 11 INTERNATIONAL BUILDING CODE 2021 ACCESSIBILITY REQUIREMENTS

CONSTRUCTION CLASSIFICATION (TYPE):

IEBC 604 LEVEL 3 ALTERATION
IBC 303.3 ASSEMBLY GROUP A-2
OCCUPANCY TYPE: NON SEPARATED MIXED USE
OCCUPANCY GROUP(S): A-2 (ASSEMBLY), B, S-1 (STORAGE), R-2 (SEPARATED)
CONSTRUCTION TYPE: TYPE III(B) (FULLY SPRINKLERED)
NUMBER OF STORIES: 3 STORY

IBC TABLE 601 FIRE-RESISTANCE RATING REQUIREMENTS FOR BUILDING ELEMENTS (HRS):
STRUCTURAL FRAME: 0 HOURS
EXT BEARING WALLS: 2 HOURS
INT BEARING WALLS / COLUMNS: 0 HOURS
INT NON-BEARING WALLS: 0 HOURS
FLOOR CONSTRUCTION: 2 HOURS BETWEEN A-2 AND R-2
ROOF CONSTRUCTION: 0 HOURS
FIRE WALL RATING: NA / 0 HOURS

GENERAL BUILDING HEIGHTS AND AREAS:
IBC TABLE 504.3 & SECTION 503 ALLOWABLE BUILDING HEIGHT IN FEET ABOVE GRADE PLANE
ALLOWABLE HEIGHT: 75'-0"
ACTUAL HEIGHT: 14'8" (HIGHEST POINT)

IBC TABLE 504.4 ALLOWABLE NUMBER OF STORIES ABOVE GRADE PLANE
ALLOWABLE HEIGHT: 3 STORIES
ACTUAL HEIGHT: 2 STORIES

IBC SECTION 508.4.2 ALLOWABLE BUILDING AREA
ALLOWABLE AREA: 24,000 S.F. (<1)
BUILDING 1 AREA (BASEMENT AND 1ST FLOOR, MIXED OCCUPANCY): 4,848 S.F. (0.202)
BUILDING 2 AREA (R-2 OCCUPANCY): 3,186 S.F. (0.133)
RATIO: 1:0.335

IBC TABLE 508.4 REQUIRED SEPARATION BETWEEN OCCUPANCIES (HOURS)
ASSUMING THE MOST RESTRICTIVE OCCUPANCY BETWEEN B AND R, NON-SPRINKLERED: 2-HR

OCCUPANT LOAD:

IBC TABLE 1004.1.2 MAXIMUM FLOOR AREA ALLOWANCES PER OCCUPANT

FUNCTION OF SPACE	LOAD FACTOR	AREA CALCULATION	ALLOWABLE OCCUPANCY
BUILDING 1 AREA			91
ASSEMBLY - DINING FIXED SEAT	5	NET 135 S.F.	27
BUSINESS	100	GROSS 1,110 S.F.	11
COMMERCIAL KITCHEN	200	GROSS 943 S.F.	5
ACCESSORY STORAGE	300	GROSS 2,891 S.F.	10
TOTAL OCCUPANTS			143

MEANS OF EGRESS:

IBC 1005.3.1 STAIRWAYS
MINIMUM REQUIRED EGRESS WIDTH:
TOTAL OCCUPANTS x 0.3" PER OCCUPANT = 42.9"
IBC 1005.3.2 OTHER EGRESS COMPONENTS
MINIMUM REQUIRED EGRESS WIDTH:
TOTAL OCCUPANTS x 0.2" PER OCCUPANT = 28.8"
PROVIDED EGRESS WIDTH:
(1) ENTRY/EXIT DOORS @ 36" = 36"
(1) EXIT STAIRWAY @ 44" = 43"
TOTAL EGRESS WIDTH PROVIDED: 79"

IEBC 805.4 EGRESS DOORWAYS
IEBC 805.4.1 MAXIMUM COMMON PATH OF EGRESS TRAVEL SHALL NOT EXCEED 75'

MINIMUM NUMBER OF EXITS REQUIRED: 2
NUMBER OF EXITS PROVIDED: 2

IBC 1009.1 ACCESSIBLE MEANS OF EGRESS REQUIRED
1 REQUIRED - PROVIDED

IBC TABLE 1017.2 EXIT ACCESS TRAVEL DISTANCE
MAXIMUM EXIT ACCESS TRAVEL DISTANCE: 250'-0"
*IN ACCORDANCE WITH SPRINKLER SYSTEM REQUIREMENTS.

IEBC 805.6 DEAD-END CORRIDORS
MAXIMUM ALLOWED: 35'-0"

PLUMBING FIXTURE REQUIREMENTS:

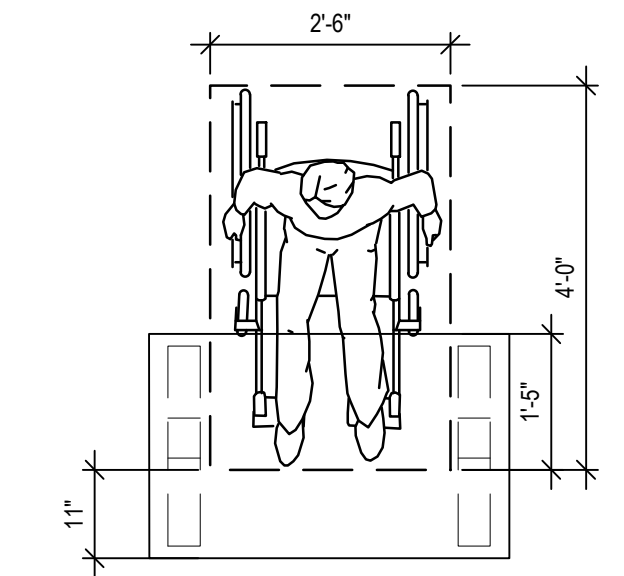
IBC SECTION 2902 MINIMUM PLUMBING FACILITIES
IBC TABLE 2902.1 MINIMUM NUMBER OF FIXTURES
OCCUPANTS / 2 = 72 MALE | 72 FEMALE
PLUMBING FIXTURE REQUIRED PROVIDED

WATER CLOSET (MALE)	1 PER 75 OCC.	2	2
WATER CLOSET (FEMALE)	1 PER 75 OCC.	2	2
LAVATORY (MALE)	1 PER 200 OCC.	1	1
LAVATORY (FEMALE)	1 PER 200 OCC.	1	1
DRINKING FOUNTAIN	1 PER 500 OCC.	1	0 ¹
OTHER	SERVICE SINK	1	1

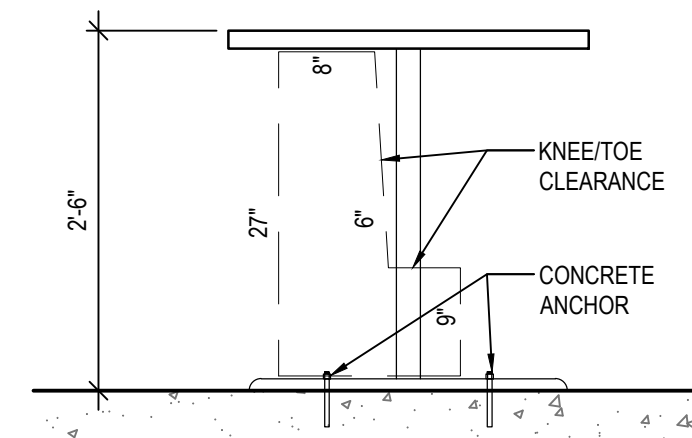
d. The occupant load for seasonal outdoor seating and entertainment areas shall be included when determining the minimum number of facilities required.
1. Where water is served in restaurants, drinking fountains shall not be required.

FIRE EXTINGUISHER REQUIREMENTS:

HAND OPERATED FIRE EXTINGUISHERS SHALL BE PROVIDED IN ACCORDANCE WITH NFPA 10 AND 96. LOCATIONS TO BE DETERMINED BY FIRE MARSHAL'S OFFICE OR CONGRUENT AUTHORITY HAVING JURISDICTION.
1. **KITCHEN FE:** PER IFC 906.4 COOKING EQUIPMENT FIRES
-MIN RATING: CLASS "K" PORTABLE FIRE EXTINGUISHER OF MIN. 1.5 GALLON (6L) CAPACITY
-QUANTITY: 1
2. **DINING FE:** PER IFC TABLE 906.3(1); MINIMUM 1 FIRE EXTINGUISHER PER 3,000 SQ.FT. OR PER MAXIMUM TRAVEL DISTANCE OF 75 LINEAR FEET.
-MIN RATING: TWO WATER-TYPE EXTINGUISHERS EACH WITH 1-A RATING
-QUANTITY: 1



1
01 CRA
ACCESSIBLE TABLES ADA CLEARANCE
SCALE: 1/2"=1'-0"



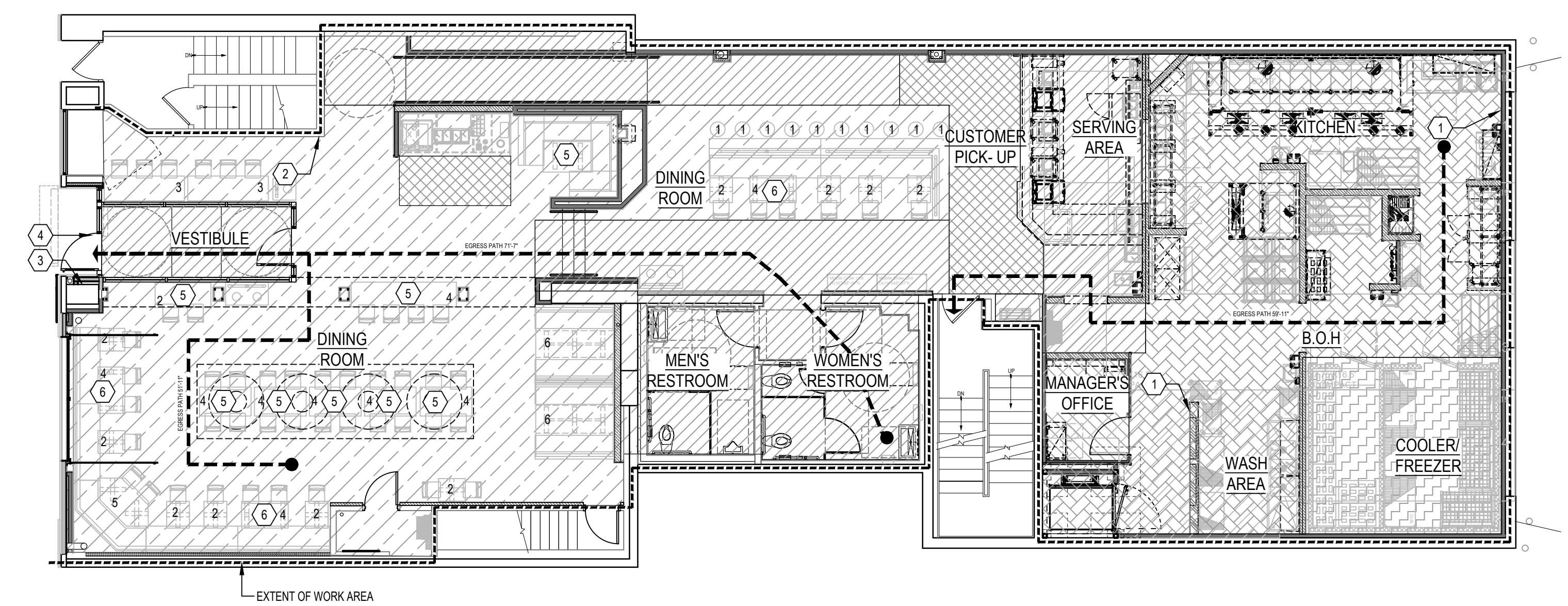
2
01 CRA
ACCESSIBLE TABLES ADA CLEARANCE
SCALE: 3/4"=1'-0"

APARTMENT- 3RD STORY
NOT IN WORK AREA
1,107.9 SQ. FT.

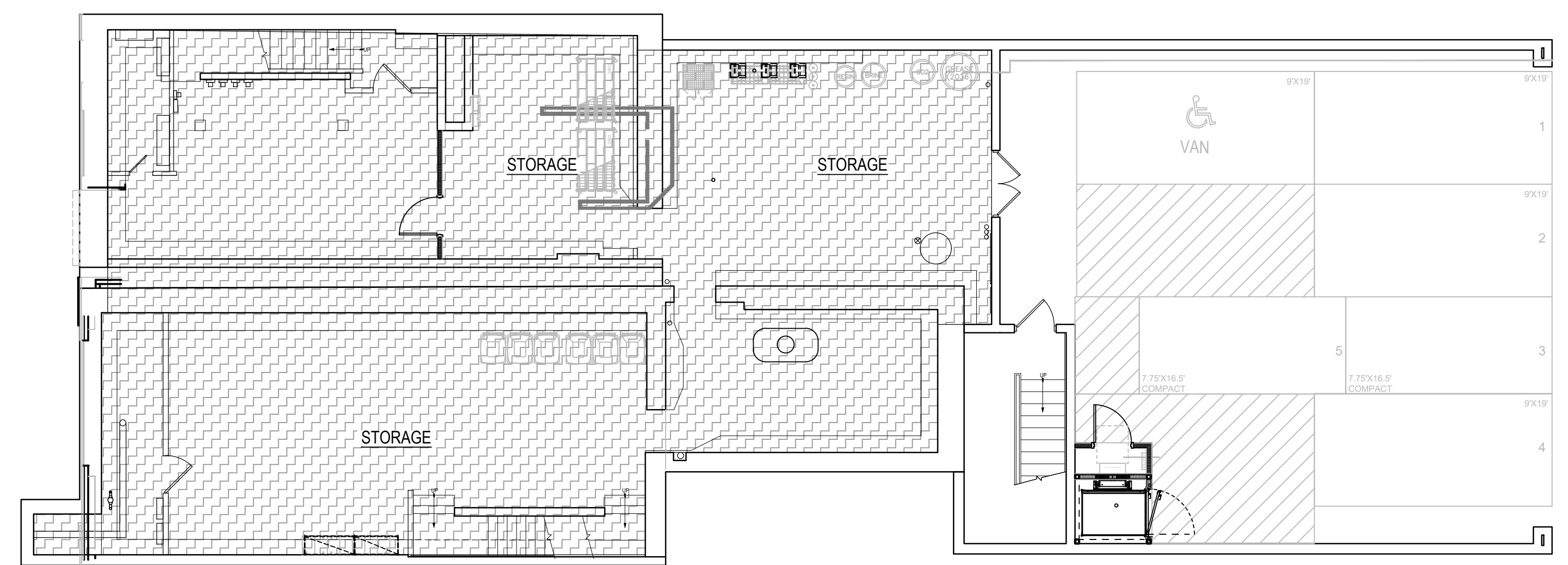
THIRD LEVEL AREA
SCALE: 1/8" = 1'-0"

APARTMENT- 2ND STORY
NOT IT WORK AREA
2,078.3 SQ. FT.

SECOND LEVEL AREA
SCALE: 1/8" = 1'-0"



FIRST LEVEL FLOOR PLAN
SCALE: 1/8" = 1'-0"



BASEMENT FLOOR PLAN
SCALE: 1/8" = 1'-0"